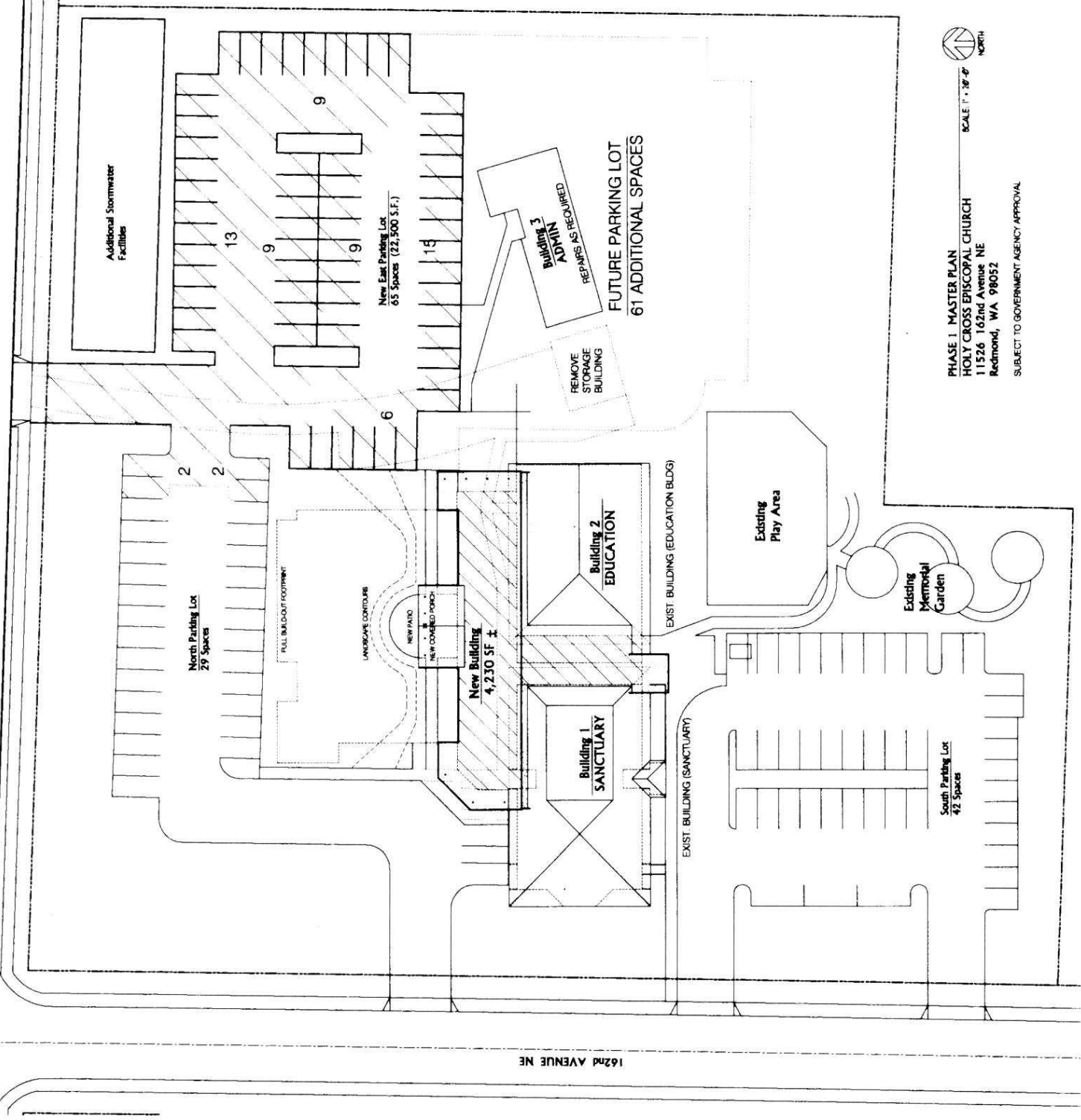
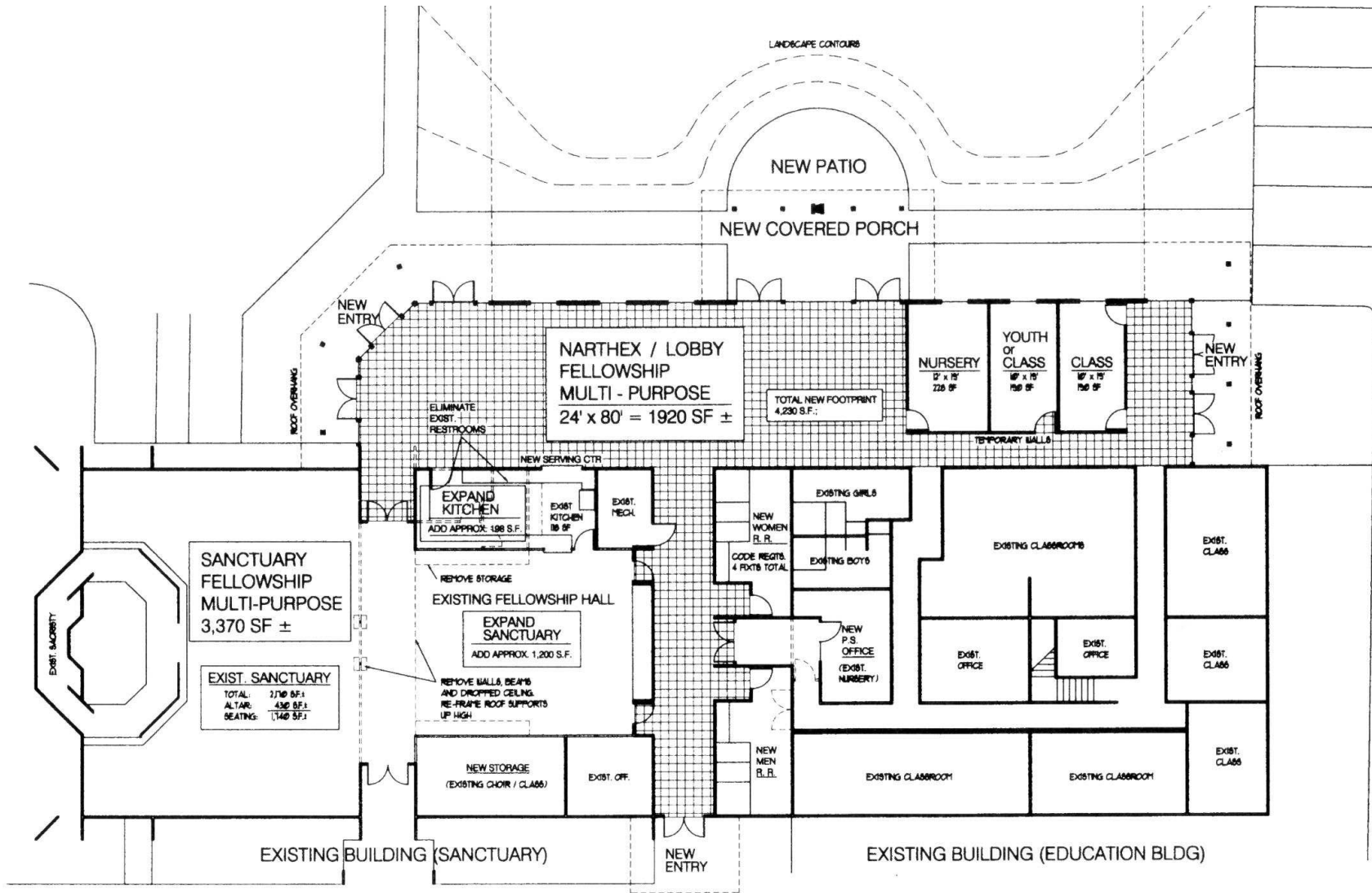


NE 116th STREET

162nd AVENUE NE



- ◆ All ministry under one roof.
- ◆ Preschool pickup and drop off in narthex instead of outside.
- ◆ Rainy day rec area for preschool in Narthex.
- ◆ Multiuse church and narthex areas.
- ◆ Inner secure education suite enveloped by the rest of the building.
- ◆ Net gain of 4230 square feet.
- ◆ Proportionate growth of worship, fellowship, education and parking space.
- ◆ Infrastructures in place to add final sanctuary in the future.
- ◆ Parking for 65 cars where we currently park 22.
- ◆ Parking allows us to serve 80 to 200 more people in their cars depending on the nature of the event.
- ◆ Parking storm water improvements in place for future final build out of the parking lot.
- ◆ We keep the Office/Ministry center for now: 4 offices, 2 meeting spaces, kitchen and storage.
- ◆ Not dependent on future members to pay for it.
- ◆ Built to grow the average Sunday attendance up from 190 to 250.
- ◆ We can live in this for as long as it takes us to grow our membership to build the final phase.



### Phase 1 Master Plan - Floor Plan

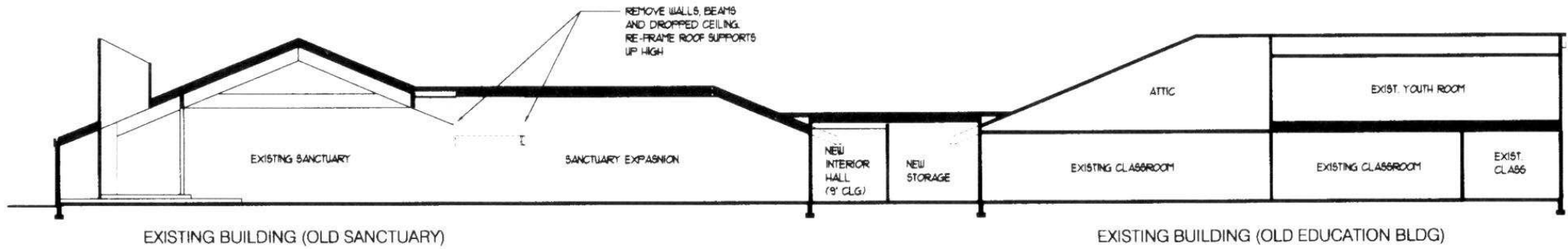
SUBJECT TO GOVERNMENT AGENCY APPROVAL



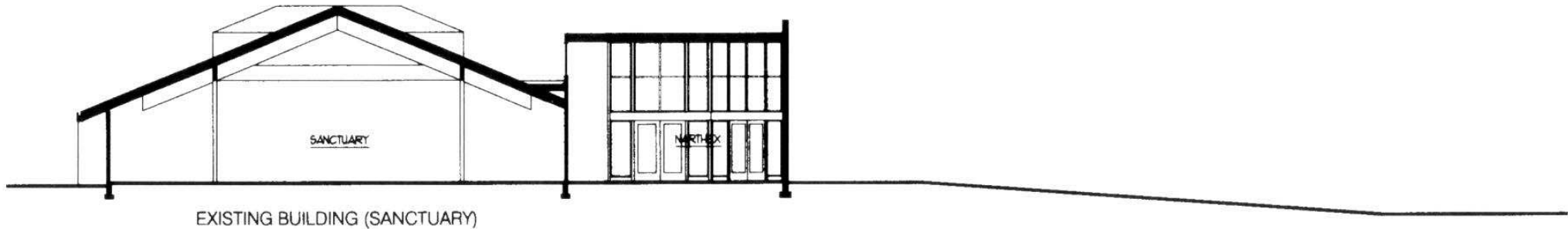
NORTH

- ◆ Sanctuary - clear space allows for variety of worship settings from church-in-the-round to rows.
- ◆ Sanctuary updates gives a second life to our current space, new carpet, paint and lighting.
- ◆ Worship space for 250 in regular attendance; for 300 when there's a crunch.
- ◆ 1920 square feet of narthex is good room for 200 people to mingle and visit.

- ◆ Manageable expansion to maintain, heat and light.
- ◆ One-butt kitchen expanded 167% to accommodate three butts!
- ◆ Kitchen serves into church or out to narthex.
- ◆ New and larger restrooms.
- ◆ New nursery.
- ◆ Preschool director's office near the main entrance to the education classrooms.

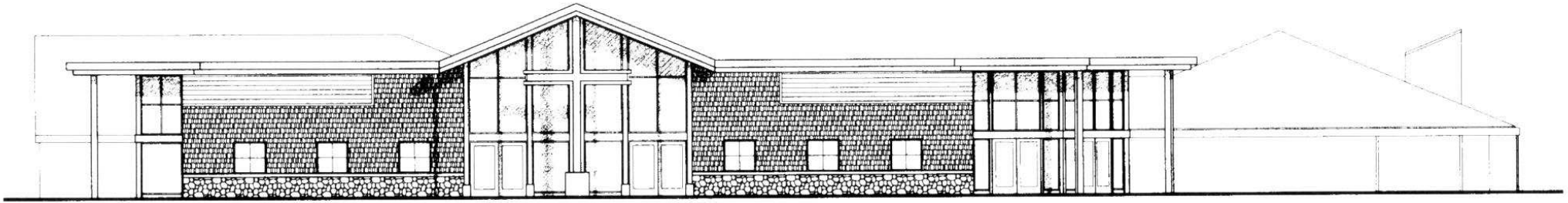


1 SECTION 1  
SCALE: 1/8" = 1'-0"

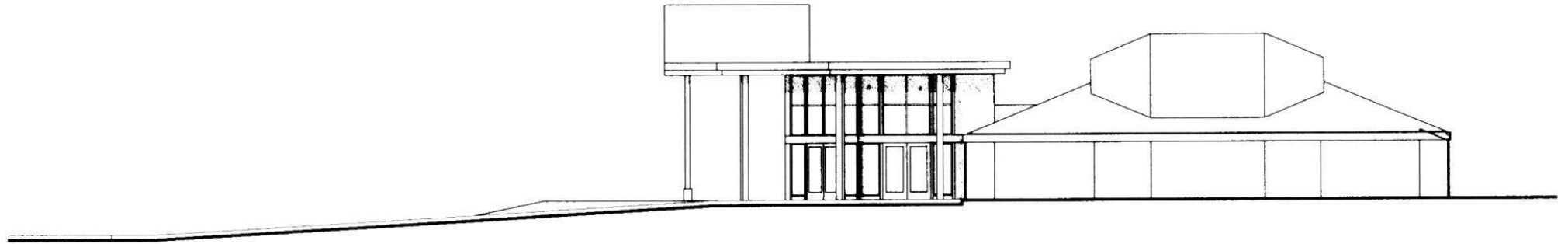


2 SECTION 2  
SCALE: 1/8" = 1'-0"

- ◆ Look up to the 18-foot ceiling in the Fellowship Hall. Imagine a clear view from the back of the current Fellowship Hall through to the altar.
- ◆ Current sanctuary seats 165. This sanctuary seats 250 comfortably, a gain of 85 seats every Sunday.
- ◆ Seats 300 for big events + spillover into narthex.
- ◆ Narthex is high/wide hall, 80 feet by 24 feet with a 16-foot ceiling.



① **NORTH ELEVATION**  
SCALE: 1/8" = 1'-0"



② **WEST ELEVATION**  
SCALE: 1/8" = 1'-0"

- ◆ New contemporary face presented to 116th Street, the main thoroughfare.
- ◆ Porch empties onto patio and encourages activities to spill out onto the green space.
- ◆ Prominent entrances invite people into the building.
- ◆ Parts of the porch to be reused when we complete the final future construction.